

Eskasoni First Nations



Cape Breton Partnership Summit 2019

Interesting Facts About Eskasoni

- Physically a community spread out over a 8 km radius
- Population of over 4600 with a 3% annual growth rate
- 1100 students attending school from Primary --- Grade 12 with a graduation rate over 96%
- Fleet of over 14 fishing vessels landing annual catches of over 4 million lbs of allowable catch along with local processing plant
- Owners of COMFIT (20 yr PPA with NSPI) Wind project @ 4.4 Mega Watts
- Annual operating budget of over 75 Million (of which 90% is spent in local economy)

Comprehensive Community Plan

- CCP lead by Eskasoni Corporate Division (Myself as GM and Alyssia Jeddore)
- strategy for success always reflect on needs of the community
- Areas of concentration include but not limited to – Health , Education, community infrastructure and Economic development.
- 5- 10 year plan
- Projects are based on Chief and Council priorities, individual feasibility study`s, the business case, financial stability and community impact.

Current Health Services

- 3 full time doctors
- Community health (Prenatal and Diabetic clinic)
- Primary Care
- Home Care
- Mental Health Services
- EHS (5 local Technicians from the community)
- Dental practise
- Full fledge Pharmacy services (8 staff)
- 2022 Long Term Care

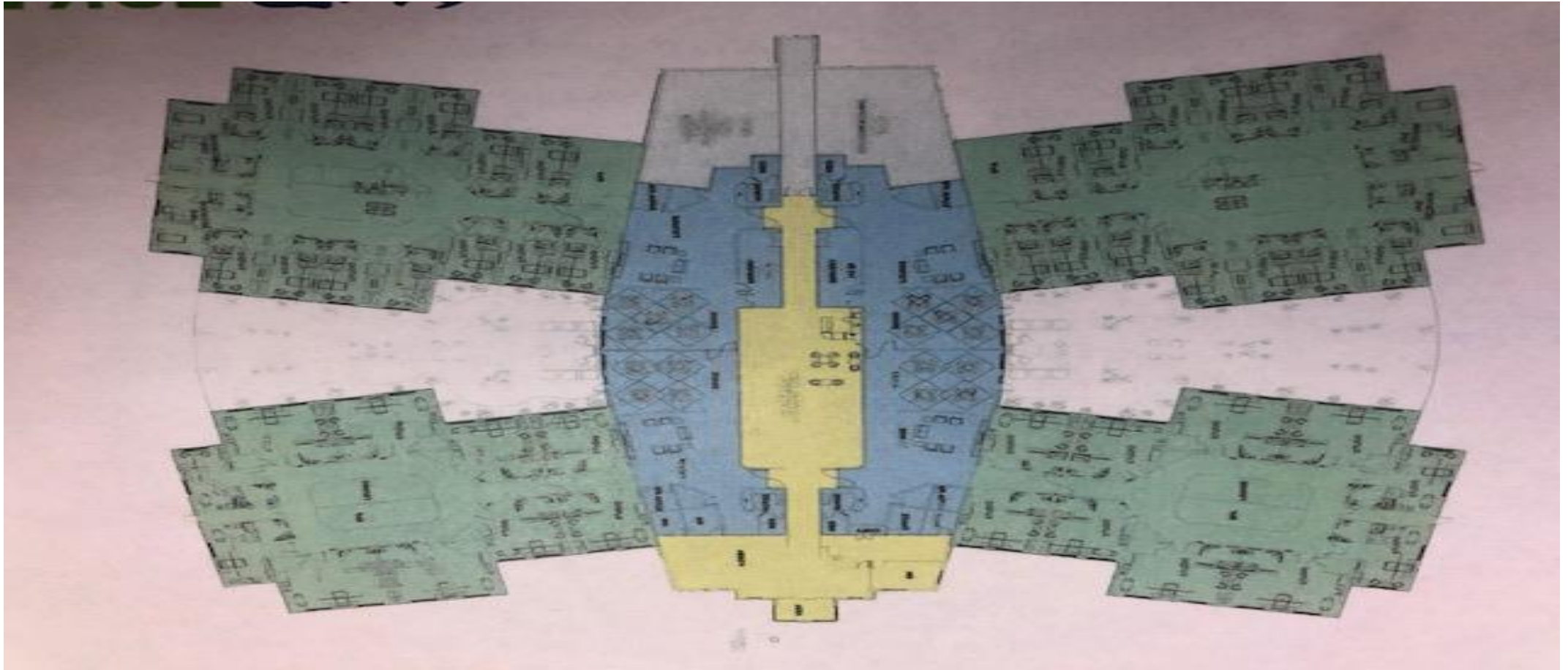
Eskasoni Health Center



Eskasoni Mi`kmaq Family Services



Eskasoni Long Term Care Project



The Process (5 years)

- Feasibility study completed in 2014 (provincial in scope)
- First approached provincial Health dept in 2015
- Establish an RFP for a managing partner for a term (Shannex)
- Built the business case (Identifiable cost to construct and operate)
- Proposed a 48 bed facility to DHW
- Negotiated the design and pier diem to operate with DHM
- Identified the site of location (several sites selected)
- Presented to all party committee (Seniors Care) – Truth and Reconciliation
- Received federal and provincial financing of 26 Million to construct -----
August 2019

Additions to reserve process 2014-2019



Impact for community

- Families to be reunited and cared for within their community!
- Care for families in traditional language
- Practise of cultural and tradition ceremonies
- To provide for seventy full time jobs (Administration, Nursing staff, Kitchen and laundry along with maintenance)
- Adult day care program
- Meals on Wheels program
- Engagement of youth and community elders

Project Timelines

- Pre engineering work currently happening on site
- Identify “scope” of work (Architectural design October- December)
- Completion of Request for proposal (managing contract for construction)--- January 2020
- Shovel in the ground ----- March 2020
- Turn Key and operational May 2022

Project Announcement August 2019



Kiknu Long Term Care Ltd

