

Infrastructure Investment Maximizing Community Impact

Presented to
Cape Breton Partnership Investors
October 10, 2019

Introduction and Purpose

- To present the anticipated scope of infrastructure
- To describe core infrastructure investment
- To explore opportunities to leverage economic and social impact
- To begin discussion on partnership and how to work together to maximize community impact



CAPE BRETON

HISTORIC INFRASTRUCTURE INVESTMENTS



CAPE BRETON REGIONAL HOSPITAL

- New ER, critical care, cancer care, inpatient beds
- Expanded operating rooms
- Enhanced mental health & addictions, diabetes education, day clinics
- New community-based paramedic program



GLACE BAY GENERAL HOSPITAL & DIALYSIS

- New ER
- Enhanced mental health & addictions, diabetes education, day clinics, and surgical & support services
- 6-station satellite renal dialysis unit at the Glace Bay General Hospital
- New community-based paramedic program



NORTH SYDNEY COMMUNITY HEALTH CENTRE & LTC & LAUNDRY

- Stronger primary care, collaborative family practice teams
- Mental health & addictions services
- Community-based services, day clinics, diabetes education
- New community-based paramedic program
- 12 short stay beds
- Replaces North Sydney Hospital
- New 60 bed LTC home
- New central laundry facility



NEW WATERFORD COMMUNITY HUB & LTC

- New community hub for health, education, recreation, community services, and long term care
- 12 short stay beds
- Stronger primary care, collaborative family practice teams
- Mental health & addictions services, community-based services, day clinics, diabetes education
- New community-based paramedic program
- Recreation facilities
- New 60 bed LTC home (replaces Waterford Heights)



MORE INFRASTRUCTURE INVESTMENTS

- New Breton Education Centre (part of New Waterford Community Hub)
- New Glace Bay P-6 school
- New Northside Middle School
- Ferrisview Elementary School renovation, North Sydney
- NSCC Marconi Campus (relocation)
- Road construction
- Revitalizing Tourism Icons including the Cabot Trail
- Rural Internet project
- Community transportation
- Childcare facilities (expansions or new centre)
- Two new Cape Breton wastewater treatment facilities and installation of new ultraviolet disinfection systems in five existing facilities
- Sydney beautification project (cruise ship pavilion, marina, boardwalk)
- *List is not inclusive*

Cape Breton Regional Hospital

- New Emergency Department
- New Critical Care Centre
- New Cancer Care Centre
- Additional Operating Rooms
- Administration Relocations

MAIN ENTRANCE

New Waterford Community Hub

The innovative community hub model includes a new school, community health centre, and a long-term care home, and relocated recreation facilities

Breton Education Centre

- New grade 6-12 school complete with enhanced gym to support Coal Bowl and Theatre

Community Health Centre

- Will include space for a collaborative family practice team
- Will include community-based services, day clinics and clinical support services and short stay beds

New Long-Term Care Home

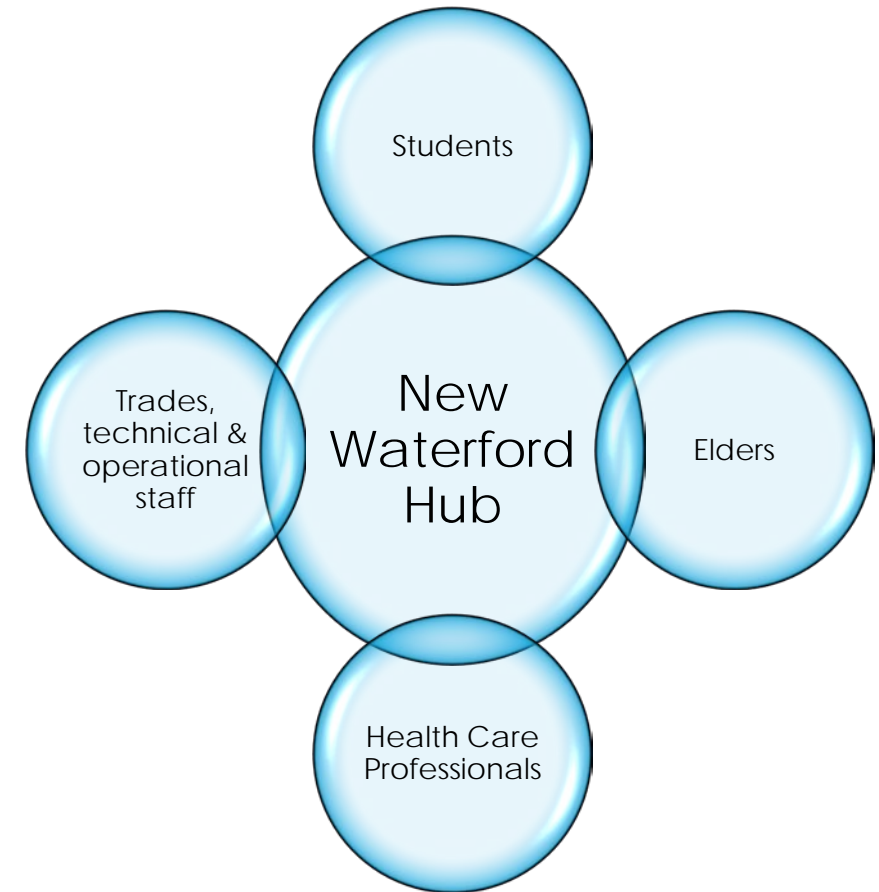
- 60 beds

New Waterford Community Hub

6

Increased opportunities for...

- Intergenerational learning
- Operational efficiencies/sharing of resources
- Improved access to community services & supports
- "Real world", "Hands-on, minds-on" educational opportunities for students
- Volunteerism, employment and mentorship
- Social inclusion





New Waterford Concept

Northside

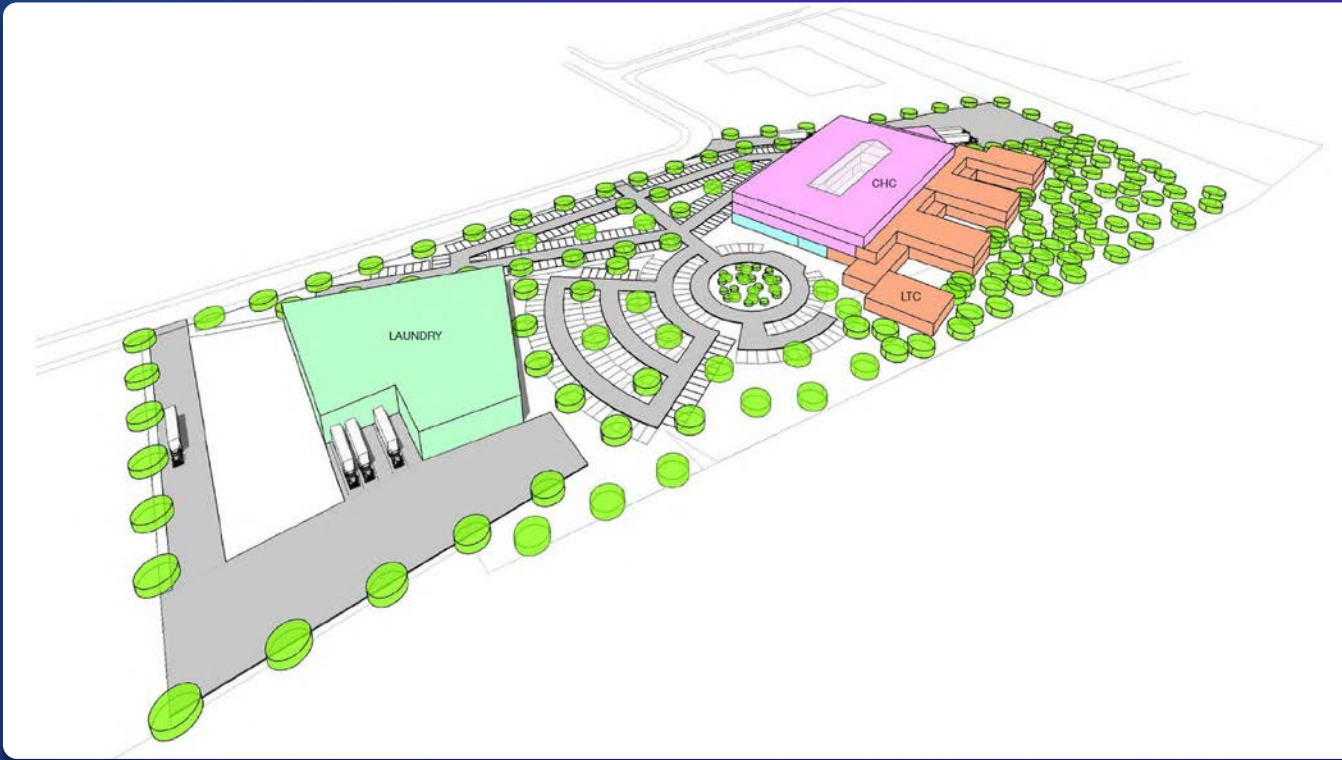
New Community Health Centre

- Will include space for a collaborative family practice team
- Will include community-based services, day clinics, clinical support services and short stay beds

New Long-Term Care Home

- 60 beds

New Laundry



North Sydney Concept



Glace Bay General Hospital

- New Emergency Department
- Enhancing Support Services
- 6 New Dialysis Unit Stations

More Infrastructure Investments

- ▶ New Breton Education Centre
- ▶ New Glace Bay P-6 school
- ▶ New Northside Middle School
- ▶ NSCC Marconi Campus
- ▶ Rural Internet project
- ▶ Community transportation
- ▶ Childcare facilities
- ▶ Wastewater
- ▶ Road construction
- ▶ Tourism Icons

More Infrastructure Investments

- Road construction
- Tourism Icons (Cabot Trail, Highland Village Renovations)
- Sydney beautification project
- CBRM water and wastewater upgrades
- Eskasoni First Nation Long Term Care Home



Work Underway

13



CBRH

Design by EXP
Construction Management
RFP Posted



Glance Bay Hospital

Glance Bay Dialysis under
construction by Joneljim



Northside

Planning Continuing
Survey and Geotechnical
Work



New Waterford

Planning Continuing
RFP for design of field
relocation

The Next Year

RPF's for Design
in North Sydney
and New
Waterford

RFP for design
of NW
Recreation
Facilities

RFP for
Construction
Management
Firm at CBRH

Final Master
Plans at GB and
CBRH

RFP for Design
of GBH

Approach

15

Leverage social and economic opportunities through a shared agenda

- ▶ *One Nova Scotia Goals*
- ▶ *Cape Breton and Mulgrave Prosperity Framework, CB Partnership*
- ▶ *Nova Scotia Apprentice Agency Diversity and Inclusion Framework*

Collective impact approach

- ▶ Commitment from a group of actors from different sectors to a common agenda and mutually reinforcing activities

Impact

For example, collaboratively:

16



Develop a Labour and Economic Benefit Strategy



Explore and leverage opportunities for under represented groups in the areas of training, apprenticeship, and related professional services



Investigate all opportunities to maximize local social and economic impact during the project and beyond



Work toward collective impact with local stakeholders

Panel Q&A

<https://HealthRedevelopment.NovaScotia.ca>